

C e s

Introduction	2
Why Are the Early Years Important?	4
Building on Progress to Date	5
Guiding Principles to Support the Vision	7
Priority Areas for Action	12
Conclusion	20

Introduction

s *s* *'s* *c* *sp* *s* , *s* *s pp*
s s *c s* *-* *, cc ss* ,
c s *sp* *s*
s c s *c* *c*
p *s* .

.....
..... O
..... E
..... B G F C
.....

- ...
- ...
- ...

E

- ...
- ...
- ...
- ...
- ...
- ...

O

- ...
- ...
- ...

Why Are the Early Years Important?

$$\begin{array}{r}
 s \quad p \quad c \quad s \quad p \\
 - \quad s \quad p \quad c \quad p \\
 - \quad .
 \end{array}$$

... I ...
 700 ... p s c ...

2

E. N. J. H.
 M. D. B. G. E. C. A.
 3
 4

O. E. P. F.
 O.

-
-
-

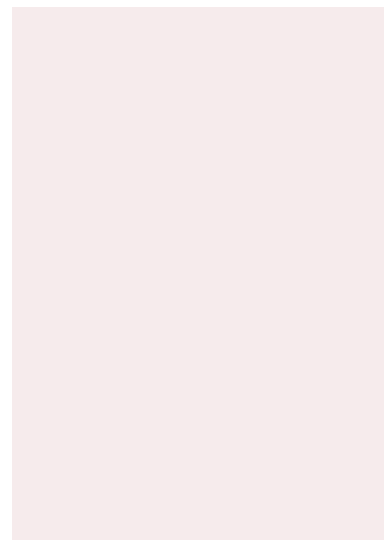
Building on Progress to Date

2003, O. I. 2009, D. G. P.
 P. A. E. L.
B s *p*
 O.
 B.

D. P.
B.
G. F. C. O. 2010 11,
B. G. F. C. A.
B. G.
F. C. O. A.

Guiding Principles to Support the Vision

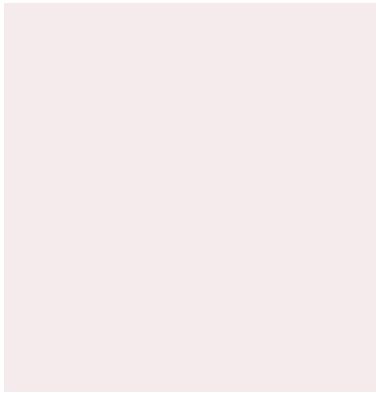
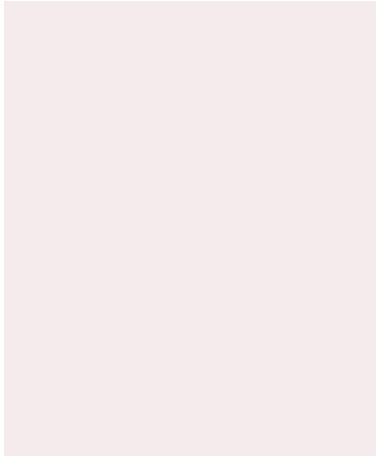
- P
- P
- P
- P



Our Commitment to Quality

Q O E P
F

C
A
R
N
I
A



Priority Areas for Action

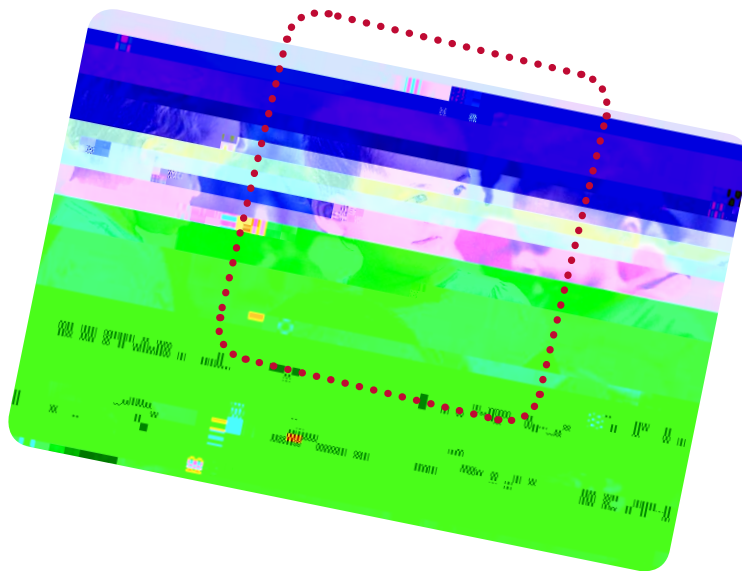
1.

A

Full-day kindergarten milestones at a glance

F 2010 2014.

- p 2010 35,000
15
- p 2011 50,000
20
- p 2012 122,000
49
- p 201 184,000
75
- p 201 F
O



With Ontario leading the way, the Council of Ministers of Education endorses play-based learning

The Council of Ministers of Education for the Americas (CMEA) has endorsed play-based learning as a key component of early childhood education. In its *Policy Framework for Early Childhood Education* (2012), the Council of Ministers of Education for the Americas (CMEA) states that play-based learning is a key component of early childhood education and is essential for the development of young children.

- ...
- ...

A ... B ... G ...
E ... C ...
A ... F ... N ... M ... I ...

The Best Start Child and Family Centres will:

- ...
- ...
- ...
- ...
- ...





